



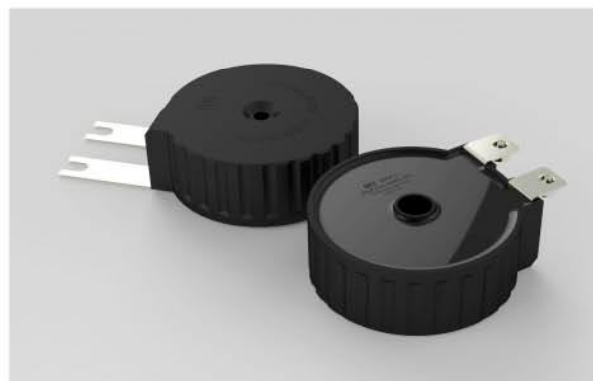
滤波电容器 模块式系列

FILTER CAPACITOR
MODULE SERIETAPE SERIES

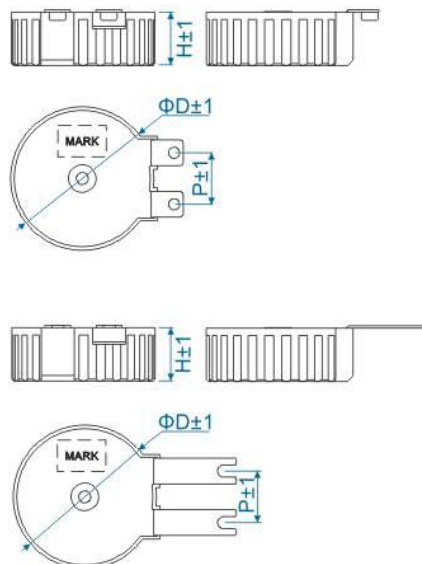
MKP-L

运用由终而始的设计理念，采用无感、塑封、加强型轴心散热、单孔式安装等设计特点，和桥堆同等间距、高度的引出端子，充分解决了铝壳式极壳间爬电距离短、连接线排易极壳短路、安装尺寸大、安装成本高、轴心散热差、性价比低等结构特点，其优良的绝缘、散热、性价比和安装便利，是铝壳模块式滤波电容器升级换代之必选。广泛应用于各类电力电子设备中作交直流滤波电容使用。

Using the design idea from end to start, the products have the features of non-inductive, plastic sealed, fortified emit heat from axes center, single hole install, etc. And the connect terminal is the same distance & height with the rectifier, completely solve the short creep age distance between terminals and case of aluminum case type of capacitor, and the copper strip need artificial forming, easy short circuit, large installation size, high installation cost, the emit heat performance of axes center is bad, low cost performance, etc. It's advanced insulation, emit heat, performance, price and the convenient install. The aluminum box filter capacitor will be replay by this kind of capacitor. They are widely applied to AC & DC filter circuit of all kinds of power electronic equipments.



引用标准 Reference standard	GB/T 17702、IEC 61071
气候类别 Climatic category	40 / 85 / 21
额定电压 Rated voltage	400VDC ~ 1200VDC
容量范围 Capacitance range	10 μ F ~ 40 μ F
容量偏差 Capacitance tolerance	$\pm 5\%$ (J)、 $\pm 10\%$ (K)
耐电压 Voltage proof	
极间 between terminals	1.5*Un(VDC)/60S
绝缘电阻 Insulation resistance(20°C)	$\geq 5000S(100VDC, 60S)$
电压爬升率 Pulse rise time (dv/dt)	$\geq 100V/\mu S$

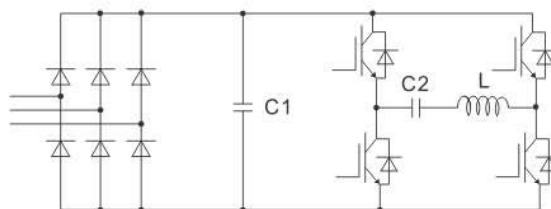


常用规格 Dimension

Unit : mm

Rated voltage	Rated cap.	ΦD	H	P
800VDC	20 μ F	66	30.5	28
	25 μ F	66	30.5	28
	30 μ F	79	30.5	28
	40 μ F	79	30.5	28

典型线路图 Typical circuit



C1:滤波电容
Filter capacitor